

To Parking Lot #1, turn onto Stadium Drive, then to circle and right onto Championship Lane

Rec Center & Pool

Marriott Hotel

PARKING LOT #1 ONLY
Prepaid Parking

THE HOTEL

**UNIVERSITY OF MARYLAND
2019 YMCA LC NATIONALS
CAMPUS MAP**

YMCA LONG COURSE NATIONALS 2019

EPPLEY RECREATION CENTER
LEVEL 2 – Fitness & Class Room
LEVEL 1 – MAIN ENTRANCE
LEVEL 0 – Gymnasium
LEVEL B – Pool

REC CENTER AREA MAP

**Swimmer/Coach
Entrance**

All levels but "Level 2"
are accessible from
Outside Stairs

bottom of stairs



HANDICAP PARKING



**Main Entrance
Spectator Entance**

HANDICAP PARKING

**EPPLEY
CENTER - POOL**

**Bus
Pickup
Area**



**BEL AIR
DORM**

Farm Drive

**Passenger
Drop off**

Proceed
down
outside stairs

Farm Drive

Valley Drive

Rt
193

**LOT1
Main Parking**

**15-20
minute
walk to
pool**

MARRIOTT



20
Minute
walk to
pool

Note:
Map is
not to
scale

Athlete Village – Level 0
Coach Check-in – Level 0
Coaches Meeting – Level 2
Spectator Entrance – Level 1
Swimmer Entrance – Level B
Admission Sales – Level 1
Vendors – Level 0 Outside

Campus Drive



THE HOTEL

20
Minute
walk to
pool

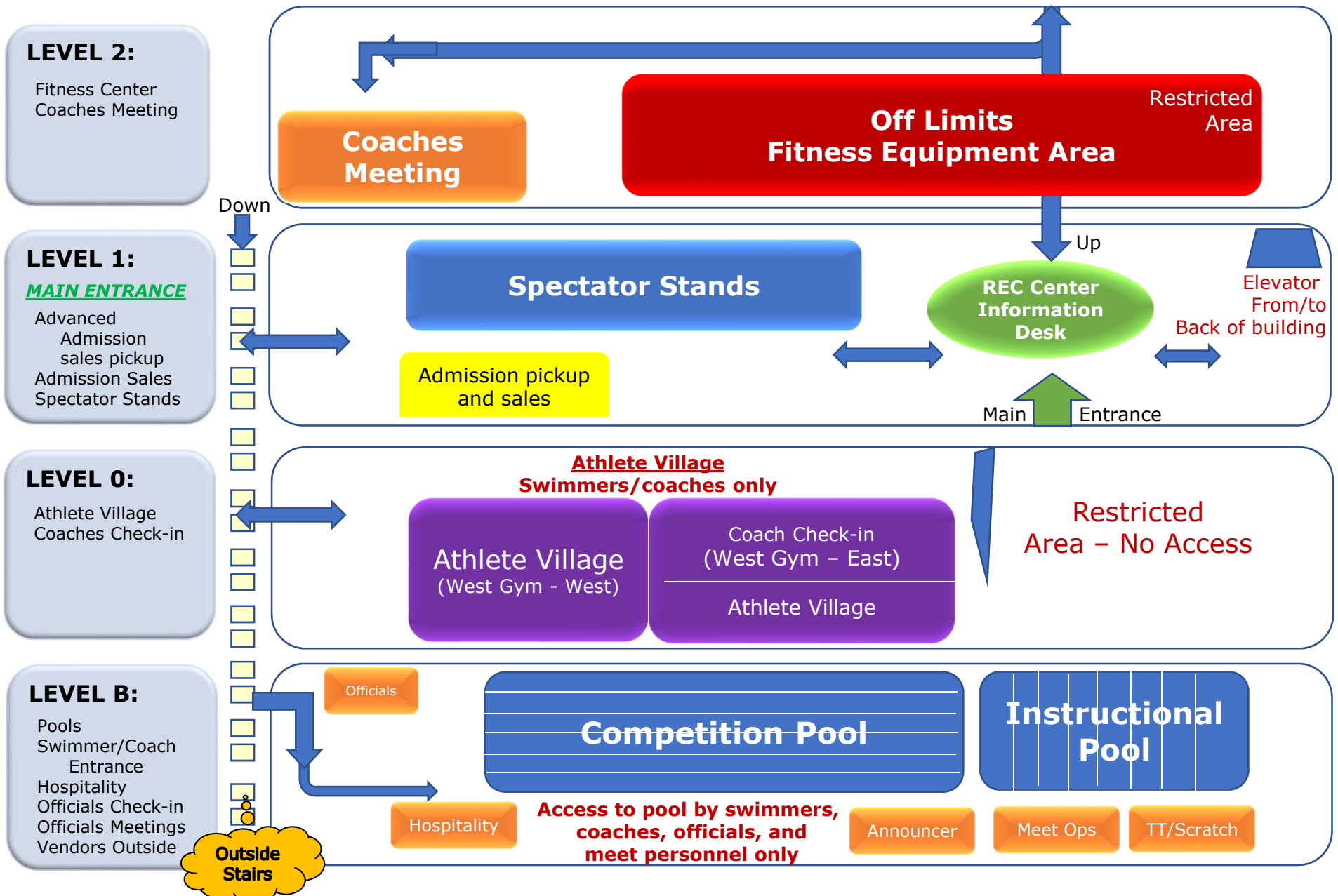
Baltimore Avenue

University Blvd East

Paint Branch Drive

EPPLEY REC CENTER BUILDING MAP

2019 YMCA Long Course National Championship



EPPLEY RECREATIONAL CENTER LEVEL B – POOL MAP

Only credentialed and authorized swimmers, coaches, officials, and meet personnel are allowed on pool deck

